

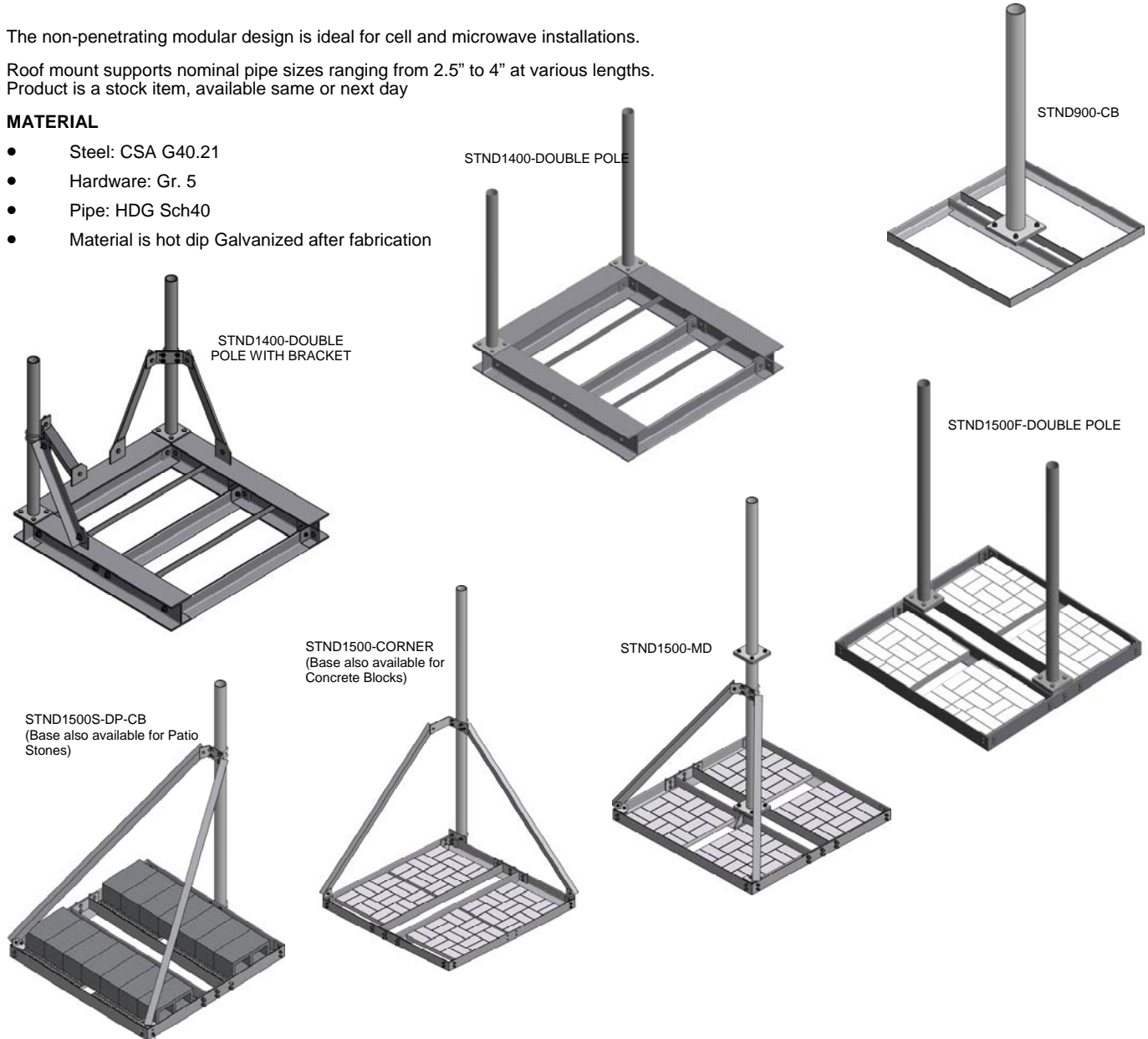
## STND Roof Mount - Single and Double Pole

The non-penetrating modular design is ideal for cell and microwave installations.

Roof mount supports nominal pipe sizes ranging from 2.5" to 4" at various lengths. Product is a stock item, available same or next day

### MATERIAL

- Steel: CSA G40.21
- Hardware: Gr. 5
- Pipe: HDG Sch40
- Material is hot dip Galvanized after fabrication



P/N	DESCRIPTION	P/N	DESCRIPTION
STND900-CB	Roof mount: Single Frame 900 x 900mm	9112-40-HDG	4.5" OD Pipe Sch. 40 HDG
STND1400-DOUBLE POLE	Roof mount: Single Side Pipe, Frame 1400 x 1400 Option 1: Base for patio stones, Option 2: Base for cinder blocks	9006-40-HDG	4" OD Pipe Sch. 40 HDG
STND1400-DOUBLE POLE WITH BRACKET	Roof mount: Single Side Pipe, Frame 1400 x 1400 Option 1: Base for patio stones, Option 2: Base for cinder blocks	9008-40-HDG	3.5" OD Pipe Sch. 40 HDG
STND1500S-DP-CB	Roof mount: Single Frame 1500 x 1500mm Option 1: Base for patio stones, Option 2: Base for cinder blocks	9001-40-HDG	2-7/8" OD Pipe Sch. 40 HDG
STND1500-MD	Roof mount: Single Middle Pipe, Frame 1500 x 1500mm Option 1: for patio stones, Option 2: for cinder blocks		
STND1500-CORNER	Roof mount: Single Corner Pipe, Frame 1500 x 1500mm Option 1: Base for patio stones, Option 2: Base for cinder blocks		
STND1500F-DOUBLE POLE	Roof mount: Single Corner Pipe, Frame 1500 x 1500mm		

REV10-11